

Sharry Edwards MEd.
January 26, 2020
740-698-9119
SoundHealthOptions.com

© Sharry Edwards MEd. / Feb 8, 2020

Never before released information revealed about the CoronaVirus

Evidence show there is a countervailing option to this Virus that is being ignored but may help the populace if revealed.

According to the media and world governments, a China based pandemic is upon us: the Coronavirus plague. The internet, Newspapers and TV commentators have reported that millions will die. Using such scare tactics without providing any ameliorating tools or solutions is unethical, in my opinion. Positing that only the government can save the people is tantamount to tyranny. If there is a way to combat such a scourge, it ought to be made public.

Such is the topic of this article, that I hope will reach the World Health Organization and be used under the Unproven Intervention consensus.

Link: <https://www.who.int/mediacentre/news/statements/2014/ebola-ethical-review-summary/en/>
In the particular circumstances of this outbreak, and provided certain conditions are met, the panel reached consensus that it is ethical to offer unproven interventions with as yet unknown efficacy and adverse effects, as potential treatment or prevention.

BACKGROUND: In 1996, Nexus Magazine published a paper from the Institute of BioAcoustic Biology & Sound Health reporting the outcomes of a project they conducted substantiating that frequency-based antidotes could combat resistant pathogens. If the process worked, it was speculated, SUPER BUGS could not remain a threat.

The article concluded: **A variety of disease-causing pathogens and health problems can be identified and cancelled-out by the input of complementary frequencies and harmonics.** See Exhibit 1.

In that article, titled Decloaking Resistant Pathogens, it was described that dark field microscopy of the blood was used to show that sound frequencies could break-away the “cloak” that pathogens use to actually “go stealth” within the body.

The low frequency sounds that were presented to the blood specimen did not kill the pathogens but rather removed the self-created, protein barriers that had been created by the invading pathogen. This allowed that the body's own "killer cells" to respond to the assault. The Nexus article included screen shots from the video of the actual decloaking and the body's attack of the pathogens. See Exhibit 2.

Article Links: <http://cruinthe.tripod.com/nexus/articles/decloakingpathogens.html> and https://www.bibliotecapleyades.net/salud/esp_salud03.htm

Over the years, Sound Health used the same protocols to provide countervailing frequencies to the public for flu related issues. Listings of frequency-based antidotes for many flu varieties, fevers, anti-biotic resistant pneumonias, Epstein Barr, additional invading threats... were provided for public use. See Exhibit 3 .

A few years ago, BioAcoustic personnel noticed a change in the mathematical patterns of the recommended flu vaccines that we had created. The numbers were too perfect. They did not match nature's germs and pathogens matrixes that had been previously created. The genes and protein antidotes were in conflict with each other and it was concluded that these frequency combinations were man-made. Nature-made pathogens have antidotes that are not harmonic. These current Corona Virus frequency antidotes show to be numerically harmonic; indicating probable human interference in their creation.

The virus' BioAcoustic math pattern competed with the actual math correlates that has been targeted by conventional medicine to be a part of the healing process for this type of pathogen.

The Institute for BioAcoustic Biology has not tested anyone reported to be infected with the Coronavirus. The following information concerning the frequencies associated with the present threat are being reported based on extrapolation of previous data.

The Frequency Equivalent^s*™ for the Coronavirus overwhelmingly correspond to the body's use of many aspects and variabilities of Glutathione, second only to Quercitrin. Both show strong relationships with the immune system. The information below is for information purposes but shows definitive negative outcomes if not available to the body. See specific info on both below:

Sources: ONLINE

Glutathione (GSH), an amino acid, is an antioxidant in plants, animals, fungi, and some bacteria and archaea. **Glutathione** is capable of preventing damage to important cellular components caused by reactive oxygen species such as free radicals, peroxides, lipid peroxides, and heavy metals.

Glutathione is involved in the **detoxification** of both xenobiotic and endogenous compounds. It facilitates excretion from cells (Hg), facilitates excretion from body (POPs, Hg) and directly neutralizes (POPs, many oxidative chemicals).

<https://www.cambridge.org/core/journals/proceedings-of-the-nutrition-society/article/glutathione-and-immune-function/39488A395CB25E88283204A938A4CBD9>

The immune system works best if the lymphoid cells have a delicately balanced intermediate level of glutathione. Even moderate changes in the intracellular glutathione level have profound effects on lymphocyte functions. Certain functions, such as the DNA synthetic response, are exquisitely sensitive to reactive oxygen intermediates and, therefore, are favored by high levels of the antioxidant glutathione. Certain signal pathways, in contrast, are enhanced by oxidative conditions and favored by low intracellular glutathione levels. The available evidence suggests that the lymphocytes from healthy human subjects have, on average, an optimal glutathione level. There is no indication that immunological functions such as resistance to infection or the response to vaccination may be enhanced in healthy human subjects by administration of glutathione or its precursor amino acid cysteine. However, immunological functions in diseases that are associated with a cysteine and glutathione deficiency may be significantly enhanced and potentially restored by cysteine supplementation. This factor has been studied most extensively in the case of human immunodeficiency virus (HIV)-infected patients who were found to experience, on average, a massive loss of S equivalent to a net loss of approximately 4 g cysteine/d. Two randomized placebo-controlled trials have shown that treatment of HIV-infected patients with N-acetyl-cysteine caused in both cases a significant increase in all immunological functions under test, including an almost complete restoration of natural killer cell activity. It remains to be tested whether cysteine supplementation may be useful also in other diseases and conditions that are associated with a low mean plasma cystine level and impaired immunological functions.

<https://www.ncbi.nlm.nih.gov/pmc/articles/PMC3628138/>

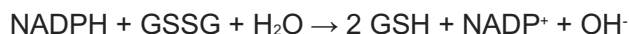
Recent evidence shows that subjects diagnosed with an autism spectrum disorder (ASD) have significantly lower levels of glutathione than typically developing children. The purpose of this study was to examine the use of two commonly used glutathione supplements in subjects diagnosed with an ASD to determine their efficacy in increasing blood glutathione levels in subjects.

There are a handful of **foods** that naturally contain **glutathione**, including asparagus, avocado, cabbage, Brussels sprouts, spinach, broccoli, garlic, chives, tomatoes, cucumber, almonds, and walnuts. However, a variety of factors can affect the levels of this vital nutrient, including storage and cooking.

Biochemical function from Wikipedia

Glutathione exists in reduced (GSH) and oxidized (**GSSG**) states. The ratio of reduced glutathione to oxidized glutathione within cells is a measure of cellular **oxidative stress**.^{[9][10]} In healthy cells and tissue, more than 90% of the total glutathione pool is in the reduced form (GSH), with the remainder in the disulfide form (GSSG). An increased GSSG-to-GSH ratio is indicative of **oxidative stress**.

In the reduced state, the thiol group of cysteinyl residue is a source of one **reducing equivalent**. **Glutathione disulfide** (GSSG) is thereby generated. The oxidized state is converted to the reduced state by **NADPH**. This conversion is catalyzed by **glutathione reductase**:



The immune system works best if the lymphoid cells have a delicately balanced intermediate level of glutathione. <https://www.ncbi.nlm.nih.gov/pubmed/11115795>

With **Quercetin** being a powerful flavonoid, there is a wide range of health **benefits**, including its ability to reduce inflammation, eliminate pain, protect against cardiovascular diseases, act as an anti-cancer, boost the immune system, reduce histamines, and decrease irritation of the skin.

Research suggests that adding **quercetin** to the diet may help to relieve allergy symptoms. Research reports that **quercetin** can have anti-allergic and **antihistamine** properties. ... **Quercetin** is naturally present in many foods and herbs, including: apples. Oct 8, 2018

Quercetin is the **most** abundant flavonoid in the **diet**. It's estimated that the average person consumes 10–100 mg of it daily through various **food** sources. **Foods** that commonly contain **quercetin** include onions, apples, grapes, berries, broccoli, citrus fruits, cherries, tea, and capers. Jun 27, 2019

The Flavonoid Quercetin Inhibits Proinflammatory Cytokine (Tumor Necrosis Factor Alpha) Gene Expression in Normal Peripheral Blood Mononuclear Cells via Modulation of the NF- κ B System

The flavonoids comprise a large class of low-molecular-weight plant metabolites ubiquitously distributed in food plants. These dietary antioxidants exert significant antitumor, antiallergic, and anti-inflammatory effects. The molecular mechanisms of their biological effects remain to be clearly understood. We investigated the anti-inflammatory potentials of a safe, common dietary flavonoid component, quercetin, for its ability to modulate the production and gene expression of the proinflammatory cytokine tumor necrosis factor alpha (TNF- α) by human peripheral blood mononuclear cells (PBMC). Our results showed that quercetin significantly inhibited TNF- α production and gene expression in a dose-dependent manner. Our results provide direct evidence of the anti-inflammatory effects of quercetin by PBMC, which are mediated by the inhibition of the proinflammatory cytokine TNF- α via modulation of NF- κ B1 and I κ B. American Society for Microbiology <https://cvi.asm.org/content/13/3/319.abstract>

These two immune supporting nutrients can be found in common foods and at your local health food store. The many deviations of nutritional glutathione support might point to the need for Reduced Glutathione. Coronavirus seems to be presenting these Superbugs as well as suppressing the immune system concurrently.

Additional Frequency Equivalents associated with the Coronavirus include:		
Inhibitor of T-cell activation		Iron regulation
Ovulation regulation		Nagalase
Carbon monoxide		Arachidonic Acid
Several 911 toxins		Eye Proteins
Pituitary Gene and stem Cells		Cholesterol metabolism
Hemolysis gene deficiency		Several vertebrae, C-4 and S-4
A component of fuel products		Histamine
Mitochondrial enzyme's, ATP, carbon Disulfide		Choline
		Stress Response gene

It has been reported on a recent podcast that this virus is actually pneumonic plague. The BioAcoustic Frequencies don't match with pneumonic but are closely associated with Influenza B. See Exhibit 3 for pneumonic information

Other on line suggestions: Enhancing the Ph of the body using sodium bicarbonate, magnesium chloride, selenium and iodine all of which can be applied at high dosages to head viruses off at the pass before they take hold and choke a person to death. All of these medicines can be administered at home safely and legally and one does not need a prescription because they are nutritional in nature, not pharmaceutical.

Epilogue

BioAcoustic Biology uses a three-prong approach to pathogen invasion. Identification, Formulation and Sound Presentation. This author wishes to provide a public online Sound Health WorkStation for people who want to evaluate themselves for the nutrients mathematically associated with the corona virus - SoundHealthPortal.com – CAMPAIGNS – available Jan 29, 2020

The opportunity is offered to the public free of charge and will provide a computerized report as to each individual's Corona Conflicts based on the Institute's decades of inquiry.

We previously posted our findings in terms of Rife Frequencies but there is much more to the story. Rife devices usually provide one frequency channel to the listener and the sounds are usually within vocal range.

We use a multi-channeled device, a programmable, Square 2 ToneBox, that delivers two frequencies simultaneously designed to entrain the brain to deliver the sounds to the appropriate body system.

Think of your brain as your central processing unit that sends and receives signals for all parts of the body. We strive to provide frequencies that support normal form & function. The data is overwhelming supportive of the idea that the voice is a holographic representation of all that you are. We have simply provided the clues as to what each frequency represents.

More people have Rife devices; hence we provided Rife-like formulations for public display. But BioAcoustic sound presentation takes into consideration many different formulations depending what system and what issues are being addressed for a client.

In 2004, the institute published this tenet:

People with similar diseases, maladies, syndromes, traumas... have similar, if not identical vocal anomalies.

Since then many prestigious organizations, like MIT and the Mayo Clinic are now using vocal anomalies in search of a basis for frequency-based medicine.

Estimates now are that the field is worth many billions and a considerable boon to SELF-HEALTH.

Each frequency that is found to be anomalous (out-of-coherence) with the rest of the body's math can be used to support health & wellness. The Institute

doesn't not have all of the answers but we have enough to know that Math as Medicine is an upcoming reality.

ADDENDUM

When I wrote this article, it was with prevention in mind. We are now need to present the BioAcoustically decoded frequencies to countervail the Corona Virus Proteins to the public.

Since more people have Rife-like devices rather than BioAcoustic devices we are presenting this to the public in Rife terms although most all of our studies have used BioAcoustic devices to substantiate our protocols.

For those BioAcoustically trained, we are holding a special class to review how BioAcoustics works with pathogens.

What people can do

1. [Go to SoundHealthPortal.com](http://SoundHealthPortal.com) – SERVICES – send us a vocal print to check your voice BioAcoustically for CoronaVirus. The Corona Virus competes with Glutathione and Quercetin.
2. Use either version of Le Ciel that we have provided on our web site, on Sarah Westall's web site – the frequencies were designed, and have been verified, to work with resistant pulmonary, respiratory and sinus infections.
3. Use the recommended supplements that the Corona Virus shows to be in competition with – Reduced Glutathione and Quercetin
4. Use the Rife-like Frequency of 158.4 or half of that 79.2 or both mixed. Use feedback equipment to verify compatibility.
5. Begin our series of classes to learn how to BioAcoustically use Frequencies to support normal form and function – by countervailing resistant pathogens

I have had trouble verifying these current frequency codes because I'm getting conflicting information from the government databases – I will keep working on it and update here.

The information we provided was for preventative purposes. Our concern now is how to BioAcoustically delivery the Countervailing frequencies.

We have explored with the idea of creating a tonebox against Corona but we don't have the staff or resources to build these quickly. I am willing to release the BioAcoustic formulations to an entity that can provide the antidotes to a large population.

So many people have contacted me who want to make billions of dollars on this tragedy. This is not the time for such greed.

ADDENDUM II

It is our intention to provide the actual BioAcoustic frequencies that we have developed as math-based formulations that would countervail the present CoronaVirus threats.

1. The virus seems to be developed on a musical scale of 224 cps as opposed to 220 or 440 that much of our present-day music is based upon.
2. The two notes involved are the A and A# notes of that scale.
3. Unlike other pathogens that we have worked with, the antidote is the activator of the other. This means there is no quick, easy way to countervail the gene and protein

224	Scale	Note
224		A
211.424		G#
199.56		G
188.36		F#
177.792		F
167.808		E
158.392		D#
149.504		D
141.112		C#
133.192		C
125.716		B
118.66		A#

I've developed some unusual numeric antidote for composing countervailing frequency sets.

onlinetonegenerator.com Binaural

Based on 224/448 scale

A# must never be played alone
Or paired with itself -

The note of A must never be played alone
Or paired with itself

A#/A must never be played together

Every other note may be played together or with itself except A and A#

A# may be played with E, or D, D# or F, F#

A may be played with D#, D and E, F, F#

A# and G# - don't play together
B and G - don't play together

Each formula set – 2 tones – needs to be played together

Smallest frequency needs to be on 1st side of the equation

10-30 seconds per mixed tone
Then go to next tone

Other tones that could be mixed in

Ac Bc
117.28/165.84

118.88/168.16

148.48/168.32

157.76/159.04

59.4/79.2 environmental

167.12/168.48

157.6/178.56

if environmental 62.93/83.92

Exhibit 1 – Two lab reports showing a significant decrease in the viral load of n AIDS patient over 30 days of BioAcoustic Sound Presentation.

HIV Load Test Date

June 8, 2004

✗ CD4 = 276

✗ VL = 21,775

49 Days from Initial Specific FE Presentation

GRANT MEDICAL CENTER
111 SOUTH GRANT AVENUE
COLUMBUS, OHIO 43215
CAP # 10391-01

OhioHealth
Grand/Riverside
Laboratories

RIVERSIDE METHODIST HOSPITAL
303 OLNEYBACH AVENUE ROAD
COLUMBUS, OHIO 43215
CAP # 10391-01

NAME: [REDACTED] DATE: 06/08/04
DOB: [REDACTED] TIME: 3:55
DOCTOR: [REDACTED] PATIENT ID: 0411031269
MED REC NUM: 1328128 LOCATION: NMR
** PERMANENT REPORT **
-- DO NOT DISCARD! --

TEST IN RANGE OUT OF RANGE REF RANGE UNITS

COLL: 06/08/04 13:40

CD4 COUNT

CBC			
WBC	5.34	3.8 L	4.5-11.0 K/CM
HGB	15.1		4.55-5.90 M/CM
HCT	49.1		13.5-17.5 GM/DL
MCV	82		81-100 FL
MCH	29.3		26.0-34.0 PG
MCHC	34.3		31.0-37.0 G/DL
RDW	13.1		11.4-14.8 %
PLT	250		150-400 K/CM
MPV	8.3		7.5-10.7

DIFFERENTIAL

NEUTS	53.1		46.0-74.0 %
LYMPHS	30.5		18.0-44.0 %
MONOS	9.0		3.0-10.0 %
EOSIN		7.1 H	0.0-6.0 %
BASO	0.9		0.0-1.6 %
ABS NEUTS	2.80		1.70-7.00 K/UL
ABS LYMPHS	1.00		0.90-4.00 K/UL
ABS MONOS	0.30		0.30-0.90 K/UL
ABS EOS	0.20		0.00-0.50 K/UL
ABS BASO	0.00		0.00-0.30 K/UL

CD4 COUNT

% CD4 (RELPER/INDUCER)			32.58 %
ABSOLUTE CD4	276		430-1580 /UL

HIV-1 RNA BY BENA

HIV-1 RNA	21,775		>75 COPIES
HIV-1 RNA (LOD-10)			<1.9

TEST PERFORMED USING CHIRON BENA REV. 3.0

(END OF REPORT)

(Not) performed at Grant

Susan A. Palfman MD Director Peter A. Accetta MD Augusto Aguilera MD James J. Bono MD
Mark S. Bennett MD Melissa C. Boyer MD Steven P. Frenkel MD Marisa L. Hales MD Charles J. Wincey MD
Michael S. Ryan MD Gordon S. Shacter MD, PhD Richard S. Salzman MD

NAME: [REDACTED] PAGE: 1

1009443 1-4 041120 04 01 WPC

HIV Load Test Date

June 29, 2004

- CD4 = 271
- VL = 18,810

69 Days from Initial Specific FE Presentation

GRANT MEDICAL CENTER
111 SOUTH GRANT AVENUE
COLUMBUS, OHIO 43215
CAP # 10391-01

OhioHealth
Grand/Riverside
Laboratories

RIVERSIDE METHODIST HOSPITAL
303 OLNEYBACH AVENUE ROAD
COLUMBUS, OHIO 43215
CAP # 10391-01

NAME: [REDACTED] DATE: 06/29/04
DOB: [REDACTED] TIME: 3:20
DOCTOR: [REDACTED] PATIENT ID: 0411031274
MED REC NUM: 1328128 LOCATION: NMR
** PERMANENT REPORT **
-- DO NOT DISCARD! --

TEST IN RANGE OUT OF RANGE REF RANGE UNITS

COLL: 06/29/04 12:00

CD4 COUNT

CBC			
WBC	5.03	4.1 L	4.5-11.0 K/CM
HGB	14.4		4.50-5.90 M/CM
HCT	41.6		13.5-17.5 GM/DL
MCV	83		80-100 FL
MCH	29.6		26.0-34.0 PG
MCHC	35.0		31.0-37.0 G/DL
RDW	12.4		11.4-14.8 %
PLT	197		150-400 K/CM
MPV	8.1		7.5-10.7

DIFFERENTIAL

NEUTS	59.1		46.0-74.0 %
LYMPHS	25.6		18.0-44.0 %
MONOS	9.3		3.0-10.0 %
EOSIN		4.4 H	0.0-6.0 %
BASO	0.2		0.0-1.6 %
ABS NEUTS	2.40		1.70-7.00 K/UL
ABS LYMPHS	1.00		0.90-4.00 K/UL
ABS MONOS	0.40		0.30-0.90 K/UL
ABS EOS	0.30		0.00-0.50 K/UL
ABS BASO	0.00		0.00-0.30 K/UL

CD4 COUNT

% CD4 (RELPER/INDUCER)			32.58 %
ABSOLUTE CD4	271		430-1580 /UL

HIV-1 RNA BY BENA

HIV-1 RNA	18,810		>75 COPIES
HIV-1 RNA (LOD-10)			<1.9

TEST PERFORMED USING CHIRON BENA REV. 3.0

(END OF REPORT)

(Not) performed at Grant

Susan A. Palfman MD Director Peter A. Accetta MD Augusto Aguilera MD James J. Bono MD
Mark S. Bennett MD Melissa C. Boyer MD Steven P. Frenkel MD Marisa L. Hales MD Charles J. Wincey MD
Michael S. Ryan MD Gordon S. Shacter MD, PhD Richard S. Salzman MD

NAME: [REDACTED] PAGE: 1

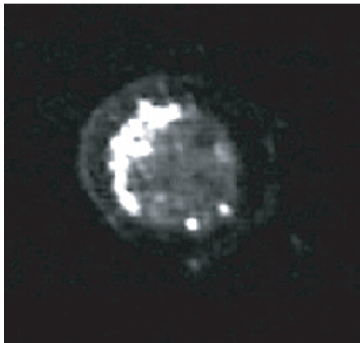
1009443 1-4 041120 04 01 WPC

Exhibit 2

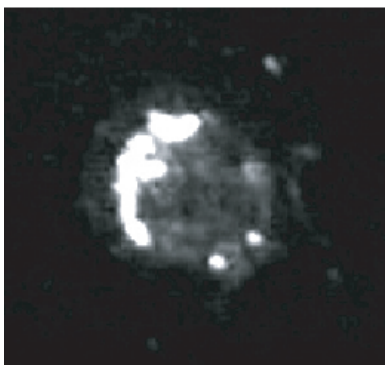
As the low frequency sound formula set was presented, the ringed barrier of the pathogen began to vibrate and break-away from the T-cell. Video samples at 2, 5, and 8 minutes show that as the ringed barrier deteriorated, the nearby neutrophils that, to this point, were inactive began to move to intercept the pathogen.



#1 - Two minutes after low frequency analog sound presentation. The ringed protein barrier (arrow) is noticeable as is the lack of neutrophils (white areas) within the sample.



#2 - Five minutes after low frequency analog sound presentation. Notice that the ringed protein barrier has starting to dissipate and the sample is beginning to brighten as the neutrophils invade the pathogen. Note the increase in the white area indicating an increase in neutrophils.



#3 - Eight minutes after low frequency analog sound presentation. Notice the breaking away of the ringed protective barrier as the neutrophils galvanize on and around the T-cell. Within fifteen minutes, the pathogen was no longer discernable. Note the increase in Neutrophil activity.

It was found during this study that each pathogen required the use of a specific

frequency to facilitate the breaking-away of the cloaking barrier. This frequency was then determined to be the Frequency Equivalent^(tm) • of that particular pathogen.

Exhibit 3 – Flu and pathogenic frequencies to be used with Rife devices

• Countervailing flu frequencies

STRAIN - CDC 2011-2012 Influenza	RIFE	
	Protein Antidote	Gene
Influenza A virus (A/California/07/2009(H1N1))	165.36 E	G
Influenza A virus (A/California/07/2009(H1N1))	187.12 F#	A
Influenza A virus (A/Perth/16/2009(H3N2))	187.92 F#	A
Influenza A virus (A/Perth/16/2009(H3N2))	167.336 E	C
Influenza B virus (B/Brisbane/60/2008)	143.68 D	F
Influenza B virus (B/Brisbane/60/2008)	166.312 E	F
Influenza B virus (B/Brisbane/60/2008)	173.672 F	D#

COUNTERVAILING FREQUENCY EQUIVALENTS™ for the
2009 THREATENED Yesinia Pestis Pathogen

Identification	Category	Associated with	Musical Note	Frequency
Original Strain	Protein	choline, B3, chromium	D	147.07 Hz
Medieval	Protein	liver enzymes, hormones,	A#	117.72 Hz
		Influenza A		
known as pneumonic	Protein	thyroid, digestion, reproduction	C#	141.25 Hz
2009 oct-nov CDC shot	Protein	throat, vocal cords, reproduction	C#	142.78 Hz
NY strain Nasal	Protein	liver enzymes	C	131.92 Hz
Utah-Montana Nasal	Protein	energy cycle of the body	F	179.09 Hz
		copyright. Nov. 2009 by Sharry Edwards - All Rights Reserved		

*BioAcoustic term of use: A Frequency Equivalent is a numeric representation of a person, place, thing or emotion. BioAcoustic FE's have been determined for nutrients, biochemicals, genomes, proteins, toxins, medications, pathogens, emotions, hormones, etc. A term coined and used by the field of BioAcoustic Biology.

References:

The doctors at a Wuhan hospital told BBC News that there had been "an alarming rate of spread" of the deadly novel coronavirus, or 2019-nCoV, over the past two weeks in the city.

Wuhan biolabs - Biowarfare Being Used Against China -

<https://mail.google.com/mail/u/0/?tab=rm&ogbl#inbox/WhctKJVjTlbhMKSCBrQKfBnDLwtrzFDZVFvJhhjzqdbqZVVfLgRrmMjLqNkSTSxZmcClv>

<https://drsircus.com/general/treatment-recommendations-for-new-virus-that-is-shutting-down-entire-cities/>

<https://www.zerohedge.com/geopolitical/third-us-coronavirus-case-confirmed-orange-county>

<https://cvi.asm.org/content/13/3/319.abstract>

<https://nexusmagazine.com/product/decloaking-pathogens-with-low-frequency-sound/?v=7516fd43adaa>

https://www.bibliotecapleyades.net/salud/esp_salud03.htm

<https://coremedscience.com/blogs/wellness/glutathione-the-master-antioxidant-1>

<https://dagorettinews.com/vocal-biomarker-market-business-opportunities-current-trends-and-industry-analysis-by-2018-to-2027/>