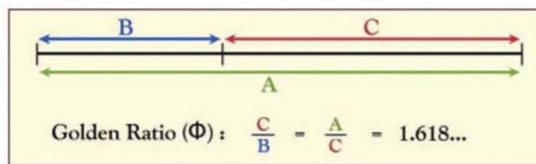
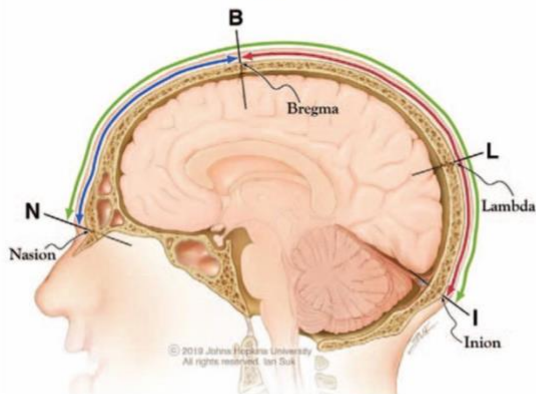


195 Divided by the Golden Ratio 1.6180339887 down to Golden Number accurate to 98%  
 120.516627809945832  
 74.483372198364149  
 46.033255616717534  
 28.450116584820746  
 17.583139033858508  
 10.866977552174648  
 6.716161482433171  
 4.150816070204577  
 2.565345412514805  
 1.58547065786666. (Ratio of Human Skull John Hopkins University Study) Height of Great Pyramid ratio 480.69 feet to base of 756 feet = 1 to 1.572739187418087

In a recent study on the human skull and 5 other mammal species, at John Hopkins University,  $1.64 \pm 0.04$  and  $1.57 \pm 0.10$ ) and approximate Phi  $\Phi$  was proven!



Cranial Measurements  
 Corresponding Ratio:  $\frac{BI}{NB} = \frac{NI}{BI} = 1.6$



If the human design by God contains the Golden Ratio, what more do we need to proceed? See this study here:

[https://journals.lww.com/jcraniofacialsurgery/Fulltext/2019/09000/Mammalian\\_Skull\\_Dimensions\\_and\\_the\\_Golden\\_Ratio.34.aspx#pdf-link](https://journals.lww.com/jcraniofacialsurgery/Fulltext/2019/09000/Mammalian_Skull_Dimensions_and_the_Golden_Ratio.34.aspx#pdf-link)